

# Update on Hotel Lake Path and Dock

May 9, 2021

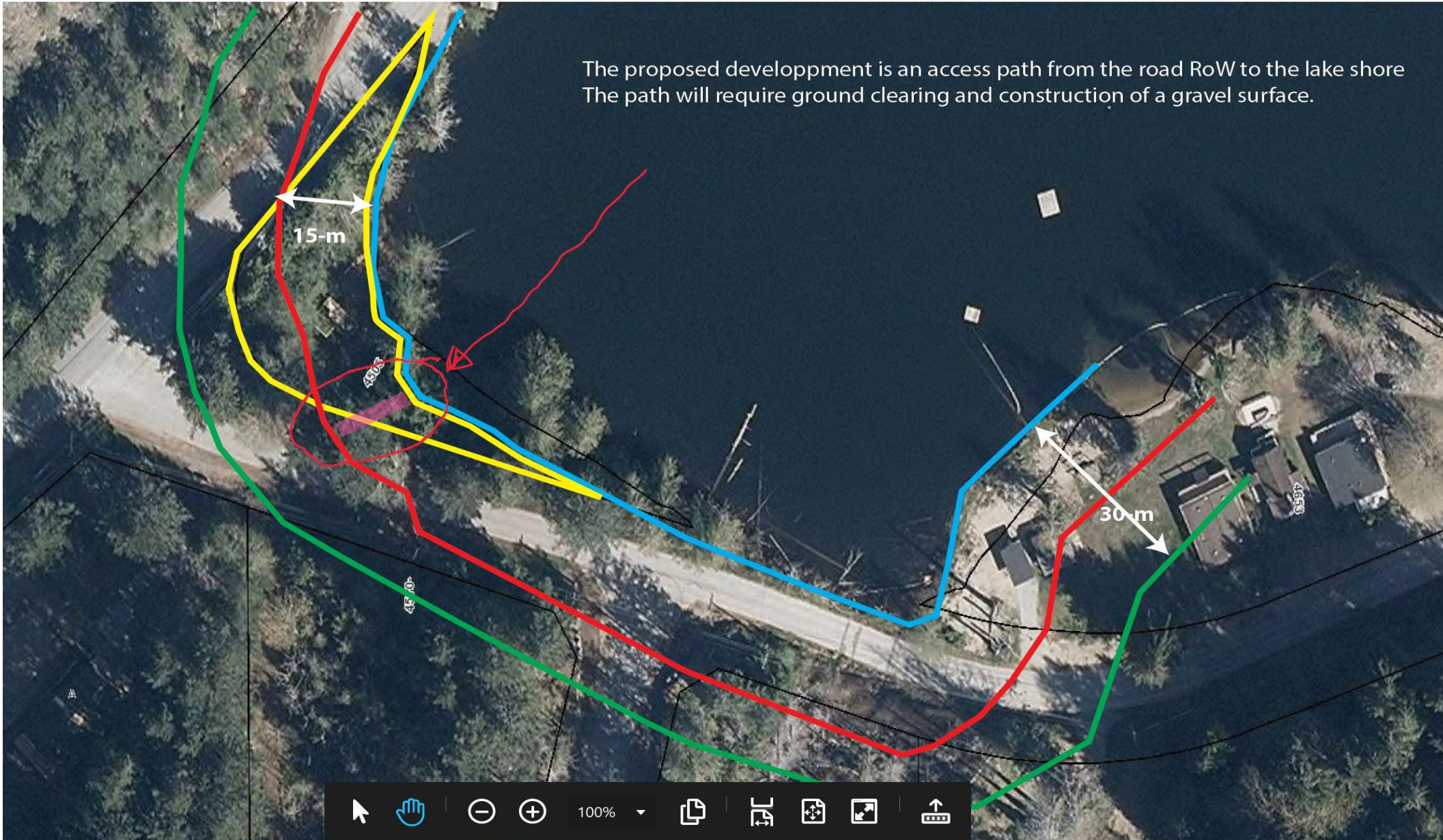
# Project Overview

## **Creation of an Access Path and Rowboat Dock at Hotel Lake**

A project of the Pender Harbour Living Heritage Society

# Proposed location of access path and dock

The proposed development is an access path from the road RoW to the lake shore  
The path will require ground clearing and construction of a gravel surface.

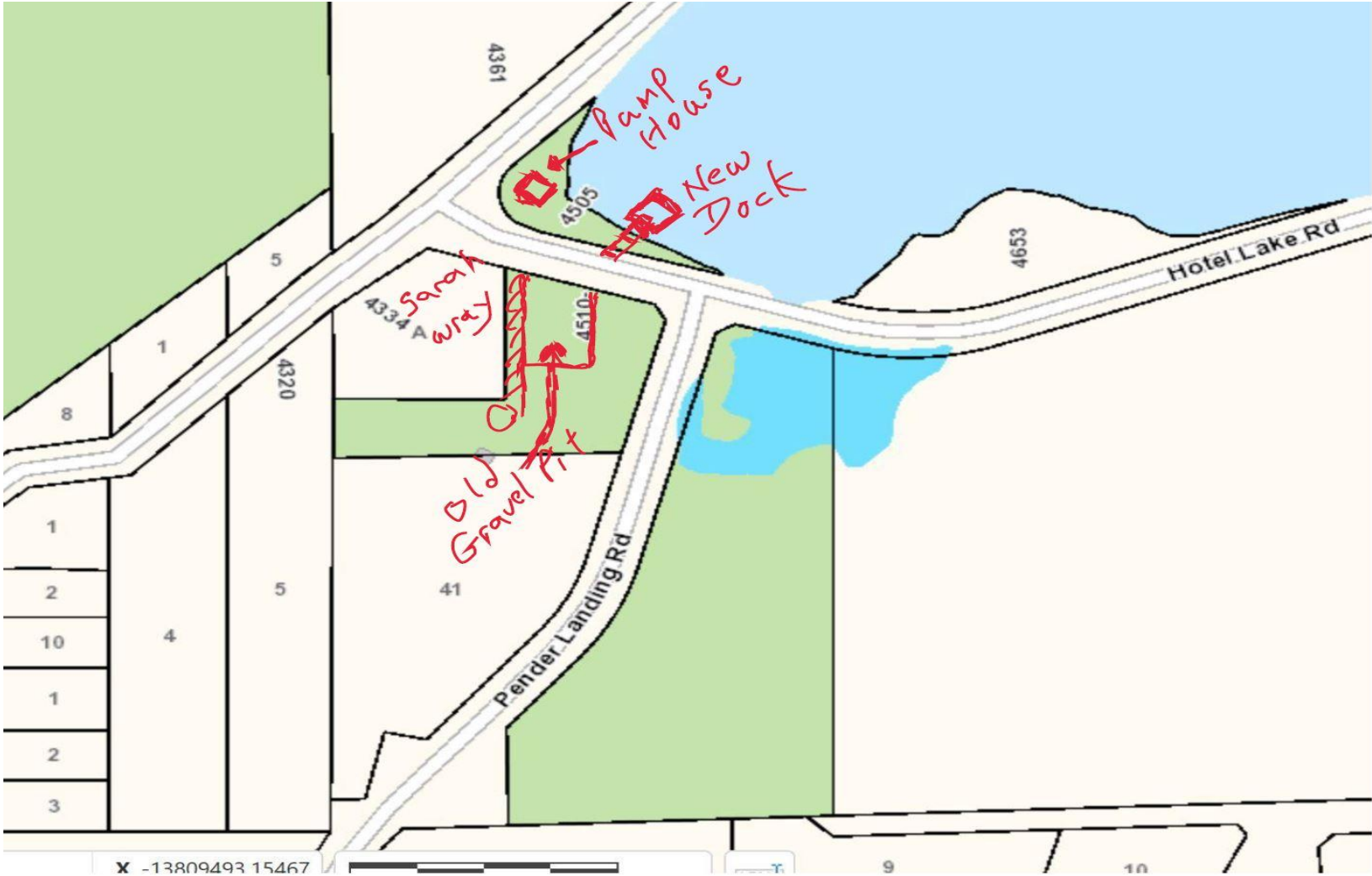


# Project Description

Pender Harbour Living Heritage Society (PHLHS) proposes building an access trail and boat dock within the boundaries of existing SCRD parkland reserve on the southwest shore of Hotel Lake. The trail and dock will accommodate occasional supervised use of two rowboats (small non-motorized vessels from the PHLHS museum collection). The facility will enable Sunshine Coast residents and visitors to experience the marine heritage of our area and learn traditional methods of small-craft management.



# The Big Picture



# Statement of Compliance with Riparian Area Regulation Guidelines

- The proposed construction of the pathway will allow movement (by hand) of handcrafted row boats from storage at the Sarah Wray Hall to Hotel Lake. Access is through SCRD parkland. The path will be constructed of gravel and will require clearing of understory. There will be limited encroachment of the SPEA. No proposed building structures will occur within the SPEA.

PHLHS additional notes:

- 1) SPEA (Streamside Protection and Enhancement Area)
- 2) There will be informational signage about local history, permitted uses of the dock and park operational hours

# SCRD Approval Process – a long and winding road

- July 31, 2019—The SCRD and PHLHS sign a Memorandum Of Understanding (MOU) in which PHLHS takes on stewardship of Hotel Lake Park. (After being drafted in 2014, the stewardship proposal was discussed with community groups and was subsequently approved by SCRD Parks division.)
- September 10, 2020 – The project team makes a presentation on anticipated project work to SCRD Directors in an open-to-the-public meeting of the Planning and Community Development Committee. The committee recommends approval of the new access trail and dock, and the writing of support letters to the Province as needed.
- October 8, 2020—The SCRD formally approves work proposed under the MOU, pending final Staff approval of project plans.

## **This SCRD approval occurred after board consideration of key issues:**

- The SCRD has a water license for Hotel Lake
- The SCRD enters into stewardship agreements with community groups whenever possible to minimize park maintenance costs to taxpayers
- The proposal for a pathway and dock is consistent with services the SCRD strives to provide throughout its network of public lakeside parklands.

# Terms of the Memorandum Of Understanding (MOU)

The Regional District agrees to provide use of the Lands for the Hotel Lake parkland improvements subject to the approval of the SCRD General Manager of Planning and Community Development and subject to procurement of the required development permits and conformance with Provincial regulations.

The Society, at its sole cost, may install and maintain for five years, with term to be extended if mutually agreed:

- Safe pedestrian access to Hotel Lake for park users including those who are mobility-challenged.
- Informational signage.
- Infrastructure and access for non-power boating.
- Picnic area (the proposed location is away from the lakeshore in the old gravel pit to the south of Hotel Lake Road).

The Society will provide detailed designs for the trail, dock, signage and picnic shelter to the Regional District for approval prior to commencing on-site work.



# **Evolution of the Project**

# Park Amenities – now and in the future

Because PHLHS is committed to preserving the ecological health of Hotel Lake and its riparian area while encouraging safe moderate use of this historic community resource, several voluntary organizations in the community have supported stewardship of the Hotel Lake parkland by PHLHS.

PHLHS is working to complete the following work within its mandate and its financial resources:

- Safe access to Hotel Lake for users of the park.
- Informational and other signage.
- Infrastructure and access for non-power boating.

# Park Amenities – continued

The SCRD and our partner societies have suggested a sand beach is possible and within the approved use of Hotel Lake Park, on the model of the child-friendly artificial sand beaches in the SCRD parkland at Katherine Lake and Ruby Lake.

PHLHS Directors have not voted to proceed with a beach project although it is included in the SCRD approval of possible projects. The board has considered the following issues:

- Funding and managing a beach falls outside of the original purposes of the PHLHS
- Any organization sponsoring an artificial beach would have to secure SCRD, Provincial, Federal and First Nations approval
- Because the Hotel Lake parklands are a public resource for community use, PHLHS would be obliged to support any project receiving overwhelming public endorsement, but such endorsement would have to be demonstrated clearly before development of a beach could be sponsored by PHLHS.

# Hotel Lake Project Team - Recent Accomplishments

- Exploration of several access points and trail routes, followed by a decision on a preferred trail alignment and dock design
- Commissioning of a Riparian Areas Regulation (RAR) Assessment Report from a Qualified Environmental Professional (QEP)
- Review of the requirements of multiple jurisdictions, including the shíshálh Nation; Ministry Of Transportation and Infrastructure (MOTI); Federal Department of Fisheries and Oceans; Forests, Lands, Natural Resource Operations and Rural Development (FLNRORD) and School District No.46 , and conducting consultations as required
- Receiving PHLHS Board approval for the plan to build the path, ramp and dock
- Receiving project approval from the SCRD General Manager of Planning and Community Development , subject to acquisition of the required development permits and proof of conformance to Provincial regulations

# What's Next

Community presentation via website and consultation with local residents.  
We welcome comments and questions [on our website.](#)

Follow-up with the SCRD for project support (expected by early summer 2021)

Work team commitment and procurement of materials

Targeted completion date: Summer 2021